An underwater photograph showing a rocky seabed covered in vibrant green seaweed and coral. The water is clear and blue, with sunlight filtering through from above, creating a bright, sunlit atmosphere. The rocks are dark and jagged, providing a natural habitat for the marine life.

The Marine Pioneer: testing approaches for the 25YEP in Suffolk and North Devon

Valuing Nature Network Conference 2018
Dr Aisling Lannin – Marine Pioneer Programme Lead
14th November 2018

Asks of the four Defra pioneers

- Test new tools and methods as part of applying a natural capital approach in practice
- Demonstrate a joined up, integrated approach to planning and delivery
- Pioneer and scale up the use of new funding opportunities
- Grow our understanding of 'what works', sharing lessons and best practice

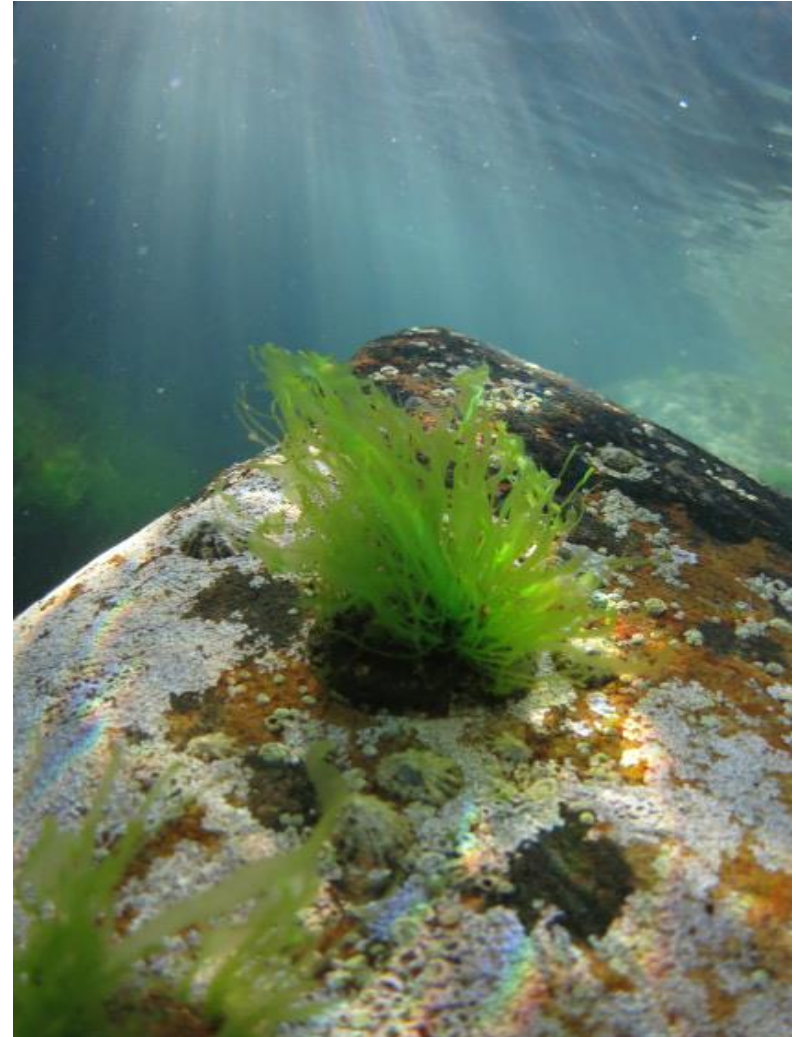


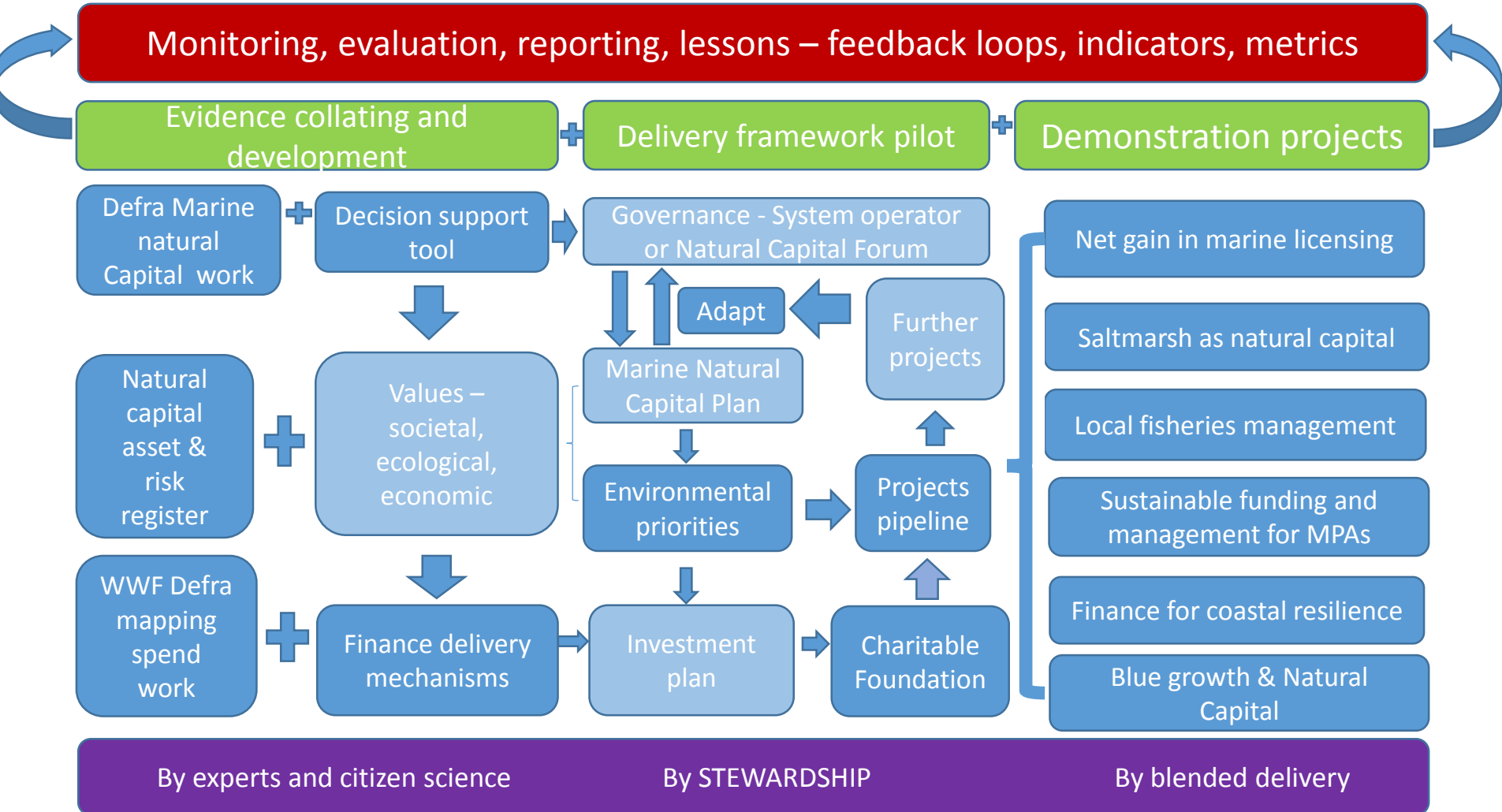
Photo taken by
Dan Hallam

Realising the aspirations of the Plan

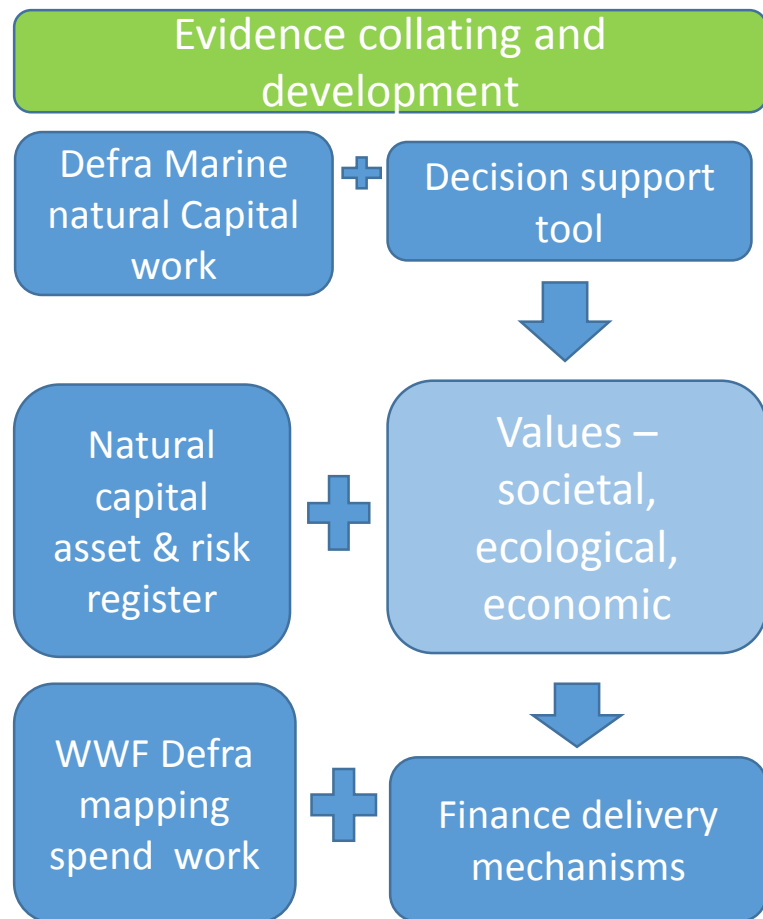
- **Everyone playing a role**
- **Behavioural and institutional change**
- **Working closely with a large range of stakeholders** over the coming year to identify their contribution
- **Strengthening leadership and delivery** through better local planning, more effective partnerships and learning from **four pioneer projects**
- **Strong governance and accountability**
- **Robust delivery framework**
- Need comprehensive and reliable **data and methods**
- Exploring how to use a **Natural Capital Approach**
- Industrial Strategy and Clean Strategy, **all government departments work together** on the plan

Marine Pioneer Programme Overview

Dark blue boxes progressing, light blue to be started

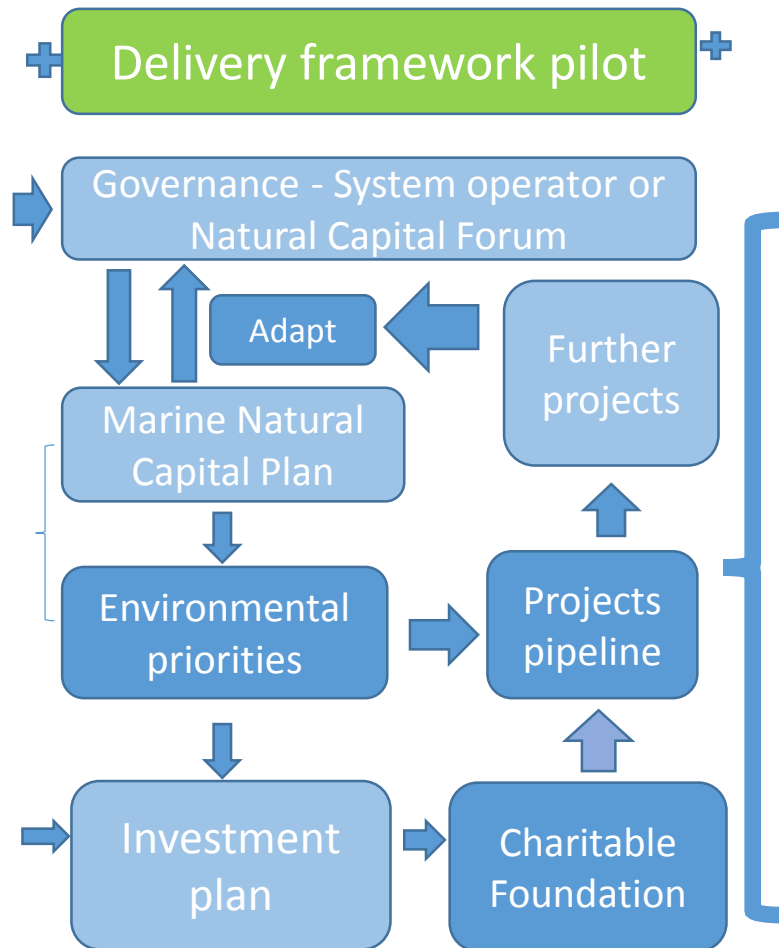


Evidence – natural capital, value, finance



- Baseline – asset register
- Baseline – social and economic values
- Benefits and beneficiaries
- Decision support tools – planning policies, sustainability appraisal
- Mapping current public and private investment
- Outlining potential mechanisms for funding

Embedding an integrated approach



- Shared vision for environmental priorities
- Representative and fair governance (adaptive)
- Sharing investment
- Transparent funding
- Projects to improve and restore marine natural capital – huge change to maintaining!!

Practising the approach

Demonstration projects

Net gain in marine licensing

Saltmarsh as natural capital

Local fisheries management

Sustainable funding and management for MPAs

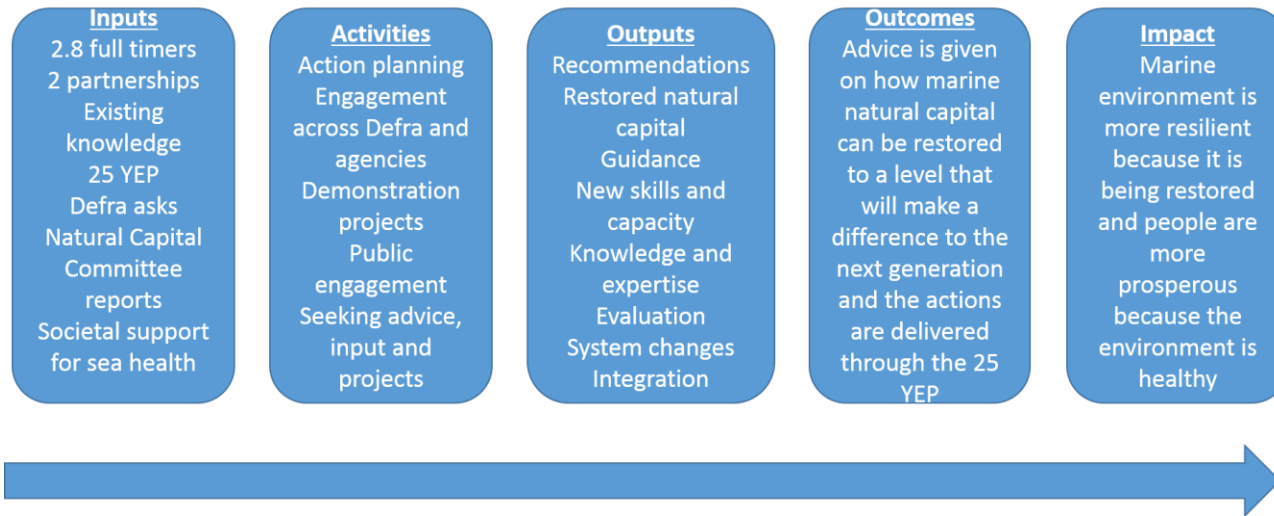
Finance for coastal resilience

Blue growth & Natural Capital

People – stewardship/custodianship

- Aspiration to co-design by using stakeholder working groups and forums
- Aspiration to develop a delivery framework that using fair and representative participation, deliberation, co-production and blended finance
- Testing co-delivery of natural capital improvement/restoration projects
- Exploring and recommending more user and citizen science contributions to evidence development
- Integrating delivery further across land and sea and between government and non-government groups

Evaluating impact and sharing lessons



- Understanding the various audiences for lessons and presenting them in an engaging way





Thank you

Aisling Lannin Marine Pioneer Programme Lead

Aisling.Lannin@marinemanagement.org.uk

Photo taken by Dan Hallam